



SPECIFICATIONS AS300e

DESCRIPTION

A 3-way full range system in a vented rectangular enclosure. Includes a 15-in woofer, a horn-loaded 7-in midrange cone and a 1-in exit HF compression driver on a 90° x 50° constant directivity horn. Powering mode is switchable: passive or bi-amplified (passive MF/HF crossover). Available in mirror-imaged left and right versions.

APPLICATION

The AS300e adapts Virtual Array™ technology to compact rectangular enclosures engineered for permanent installation. True 3-way design dramatically improves the quality of speech reproduction while the cone-driven midrange horn extends pattern control into the lower octaves. A flexible, powerful installation tool with comprehensive 3/8"-16 mounting/suspension points. Six year warranty.

Applications include:

Stadiums Arenas Dance Clubs
 Gymnasiums Houses of Worship
 Performing Arts Centers

PERFORMANCE

Frequency Response (Hz)	
±3 dB	65 Hz to 16 kHz
-10 dB	50 Hz
Axial Sensitivity (dB SPL/1 Watt/1m)	
Full Range Passive	98
Bi-amped MF/HF	104
Bi-amped LF	98
Impedance (Ohms)	
Full Range Passive	8
Bi-amped MF/HF	8
Bi-amped LF	8
Power Handling (Watts, Continuous)	
Full Range Passive	500
Bi-amped (MF/HF)	300
Biamped LF	500
Recommended High-Pass Frequency	
24 dB/Octave	50 Hz
Calculated Maximum Output (dB SPL, @ 1m)	
Full Range Passive Peak	131
Bi-amped MF/HF Peak	134
Bi-amped LF Peak	131
Full Range Passive Long Term	125
Bi-amped MF/HF Long term	128
Bi-amped LF Long Term	125
Nominal Coverage Angle / -6 dB points (degrees)	
Horizontal	90
Vertical	50



PHYSICAL

Product Group	I	
LF Subsystem & Loading	1x 15-in vented	
MF Subsystem & Loading	1x 7-in horn loaded cone	
HF Subsystem & Loading	1x 1-in exit compression driver on constant directivity horn	
General System Configuration	3-way, full range	
Powering Configuration(s)	Switchable: passive or bi-amplified (passive MF/HF crossover)	
Controls (switches, knobs)	Bi-amp/passive switch	
Cabinet Type (shape)	Rectangular	
Enclosure Materials	Baltic birch plywood	
Finish	Black catalyzed polyurethane	
Connectors	4-Terminal barrier strip & Neutrik NL4 speakon	
Suspension Hardware	(20) 3/8"-16 threaded mounting/suspension points (4 each top bottom and sides/4 bottom for OmniMount® 500 bracket)	
Grille	Vinyl coated perforated steel	
Dimensions	inches	millimeters
	Height	17.5 444
	Width	32.5 832
	Depth	15.8 400
Weights	pounds	kilograms
	Net Weight	124 55.9
	Shipping Weight	127 57.2

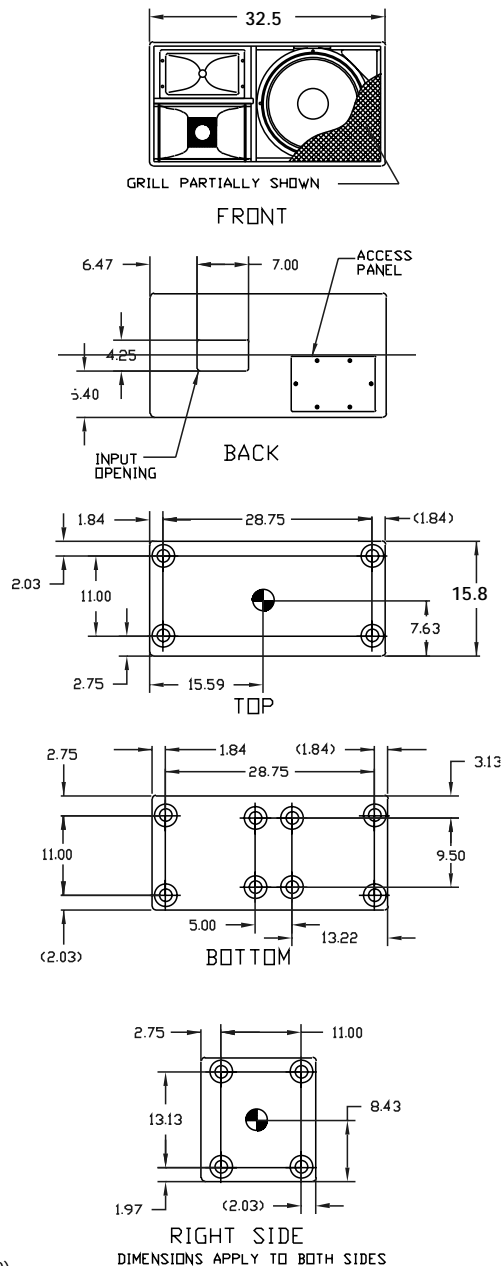




SPECIFICATIONS AS300e

DIMENSIONAL DRAWING

- ⊙ INDICATES MOUNTING POINT, 3/8"-16 THREADED HOLE (PI ANGLE).
- ⊕ INDICATES CENTER OF BALANCE.



A & E SPECIFICATIONS

The three-way full range loudspeaker system shall incorporate a 15-in LF transducer, a 7-in MF transducer and a 1-in exit compression driver HF transducer.

The LF driver shall be mounted in a vented enclosure tuned for optimum low frequency response. The MF driver shall be loaded into a midrange horn constructed of 1/8" birch plywood reinforced with high density polyurethane foam. The MF horn shall incorporate a phase/displacement plug. The HF driver shall be loaded on a constant directivity horn with a nominal coverage pattern of 90° (h) x 50° (v). An internal passive filter network shall provide fourth order acoustical crossover and system equalization of the full range system in passive mode and of the mid and high frequency sections in bi-amped mode.

System frequency response shall vary no more than ± 3 dB from 65 Hz to 16 kHz measured on axis. In passive mode, the loudspeaker shall produce a Sound Pressure Level (SPL) of 98 dB SPL on axis at 1 meter with a power input of 1 Watt, and shall be capable of producing a peak output of 131 SPL on axis at 1 meter. It shall handle 500 Watts of amplifier power (continuous) and shall have a nominal impedance of 8 Ohms.

In bi-amped mode, the low frequency section shall meet all passive mode performance criteria. In addition, the mid/high section in bi-amped mode shall produce a Sound Pressure Level (SPL) of 104 dB SPL on axis at 1 meter with a power input of 1 Watt, and shall be capable of producing a peak output of 134 SPL on axis at 1 meter. The mid/high section bi-amped mode shall handle 300 Watts of amplifier power (continuous) and shall have a nominal impedance of 8 Ohms.

The loudspeaker enclosure shall be rectangular in shape. It shall be constructed of multi-ply, void-free cross-grain-laminated Baltic birch plywood and shall employ extensive internal bracing. It shall be finished in black catalyzed polyurethane. Input connectors shall be 4-terminal barrier strip and Neutrik NL4 Speakon. A toggle switch to select passive or biamped mode shall be provided. 20x 3/8"-16 threaded mounting/suspension points (4 each top, bottom and sides/4 bottom for OmniMount® 500 Series bracket) shall be provided. The front of the loudspeaker shall be covered with a vinyl coated perforated steel grille.

The three-way full range loudspeaker shall be the EAW model AS300e.

510511(0)
7/26/99

Manufacturing tolerances are +/- 0.13 and +/- 1°

